

PAD EYE

316-NM STAINLESS STEEL



Import



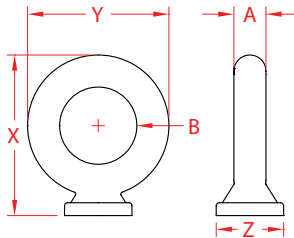
Drop
Forged



Precision
Machined



Suncor
Exclusive



ITEM	A (size)	B	X (height)	Y (length)	Z (width)	WT (lb)	PACKAGING TYPE	EACH (qty)	INNER (qty)	CARTON (qty)	UPC
S0324-0005	3/16"	0.50"	1.06"	0.90"	0.38"	0.03	POLYBAG	1	10	200	791506041832
S0324-0007	1/4"	0.63"	1.31"	1.15"	0.56"	0.06	POLYBAG	1	10	200	791506041849
S0324-0008	5/16"	0.75"	1.56"	1.40"	0.63"	0.10	POLYBAG	1	10	100	791506041856
S0324-0010	3/8"	1.00"	2.00"	1.75"	0.87"	0.21	POLYBAG	1	10	200	791506041863
S0324-0013	1/2"	1.25"	2.50"	2.25"	1.00"	0.38	POLYBAG	1	1	50	791506041870
S0324-0016	5/8"	1.50"	3.25"	2.75"	1.38"	0.80	POLYBAG	1	1	20	791506041887
S0324-0020	3/4"	1.75"	3.78"	3.25"	1.80"	1.46	POLYBAG	1	1	10	791506041894

NOTE:
WLL IS DEPENDENT ON QUALITY OF THE WELDING AND ATTACHED STRUCTURE.
PAD EYES HAVE FORGED MARKINGS OF 316-NM AND SIZE. UNDERSIDE IS MACHINED FOR PERFECT SEATING.
ALL DIMENSIONS ARE NOMINAL (+/- 3%) AND ARE SUBJECT TO CHANGE WITHOUT NOTICE.